

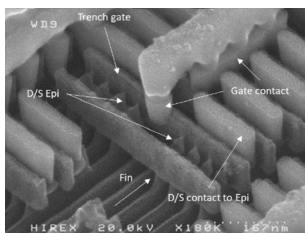


LAT

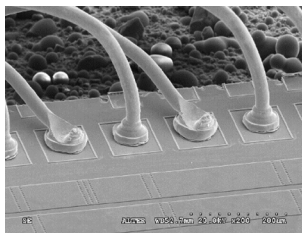
TECHNOLOGY ANALYSIS LAB

• The LAT (Technology Analysis Lab) is in charge of performing deep-dive Analysis on product construction or product failure. The laboratory mission is to identify potential weakness or root cause of malfunction on part or system.

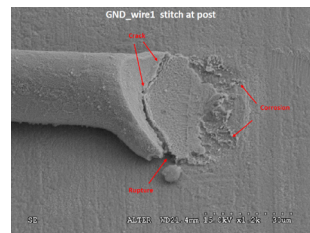
Construction analysis Reverse analysis



Destructive Physical Analysis



Failure Analysis



<https://www.altertechnology-group.com/en/home/>
General Manager
F.TILHAC
f.tilhac@altertechnology.fr

Accueil
C.GORUK
c.goruk@altertechnology.fr

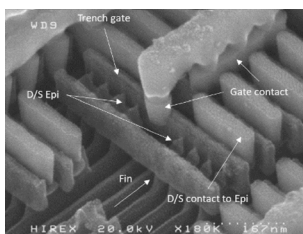


LAT

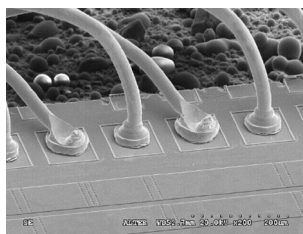
TECHNOLOGY ANALYSIS LAB

• Le LAT (Technology Analysis Lab) est chargé d'effectuer des analyses approfondies sur la construction ou la défaillance d'un produit. La mission du laboratoire est d'identifier les faiblesses potentielles ou la cause profonde du dysfonctionnement d'une pièce ou d'un système

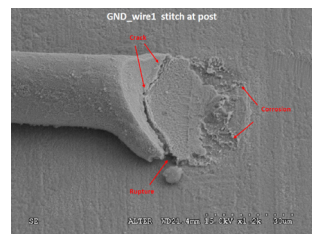
Construction analysis Reverse analysis



Destructive Physical Analysis



Failure Analysis



<https://www.altertechnology-group.com/en/home/>
General Manager
F.TILHAC
f.tilhac@altertechnology.fr

Accueil
C.GORUK
c.goruk@altertechnology.fr